

## Rear-ventilated facades - system (RVF)

---

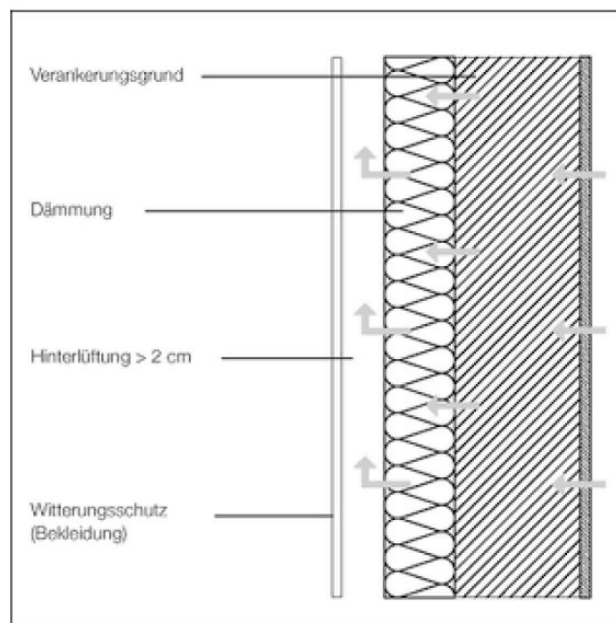
Rear-ventilated facades are among the most successful facade systems.

A recent market study shows that architects appreciate in addition to the functional safety, the creative possibilities of a pre-hung ventilated facades.

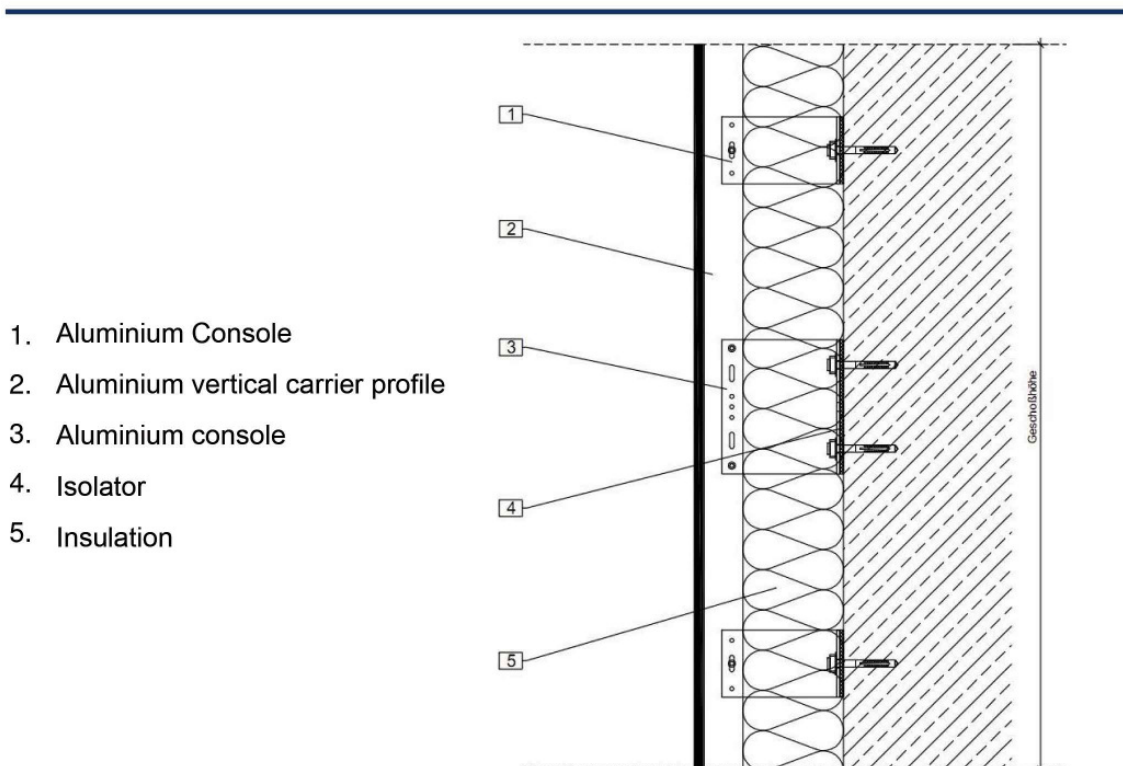
The system of the rear-ventilated facade allows the choice of different building facades.

The design of the facade is thus individually adapted to the characteristics of a building.

Also combinations of materials are - easy to realize - with the use of various cladding materials.



## Rear-ventilated facades - system (RVF)



This drawing is a schematic diagram.

The final dimensions are to be agreed with the facade manufacturers.

Support brackets from aluminum using approved anchors in static required intervals are fastened to the facade.

Hard and sliding to the strain of freedom in connecting consoles and support section for static targets.